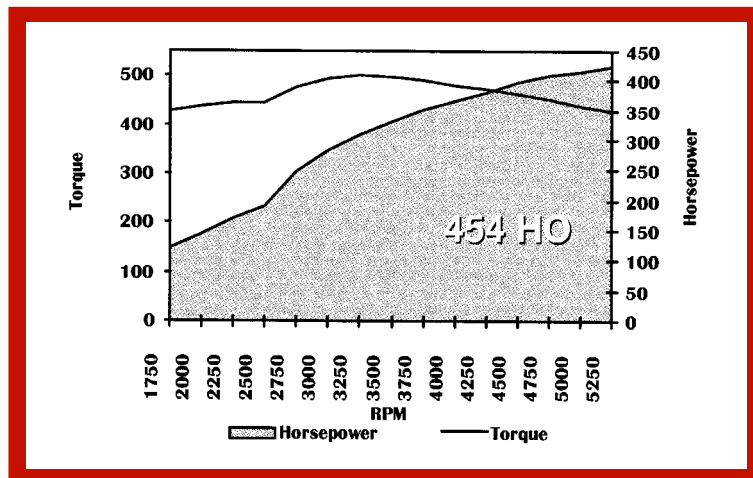


P/N 12568774 — 454 HO

425 Horsepower: Muscle Car Muscle



454 HO

The 454 HO offers tremendous value in a big block crate engine. Based on the Gen VI block, this 425 horsepower cast iron head engine is a great choice for that muscle car in the garage. We've heard of several of our customers replacing their rare matching number 396, 427 or 454 with our 454 HO in order to drive their car on today's gasoline without fear of destroying their classic engine.

The HO stands for high output, it also stands for big valves, rectangular ports, forged pistons, forged steel crankshaft, forged connecting rods and four bolt mains. Sounds a lot like the performance big blocks of the late 60's doesn't it? When you add in the steel roller camshaft, shotpeened rods, windage tray, one piece rear main seal and high speed single roller timing chain, it starts to sound more like the performance big block of the new millennium. And it is.

The 454 HO makes 500 ft.lbs of torque with its rectangular port open chamber cylinder heads. With 118cc combustion chambers, the modest 8.75 to 1 compression ratio loves today's pump premium and has no appetite for lead, octane boosters or other fuel additives. Its 2.19" intake and 1.88" exhaust valves and high lift .510"/.540" roller cam let it breathe with the best of the early muscle motors.

With your carburetor, HEI distributor, exhaust system and bright red '67 Corvette coupe (sold separately 34 years ago), you've got a muscle cruiser worthy of your time, effort and expertise. And, if you want to use your muscle car's fuel system with a mechanical fuel pump, you can because the 454 HO Gen VI block has a conventional style fuel pump boss.

The 454 HO is not intended for marine use, and should only be used in 1978 and earlier pre-emissions street vehicles or any year off road vehicles.

CRATE ENGINES

454 HO Technical Information

Horsepower	425 @ 5250 RPM
Torque	500 @ 3250 RPM
Max. Recommended RPM	5500
Compression Ratio	8.75:1
Block	12550307 Cast Iron - Four bolt mains
Crankshaft	14096983 Forged Steel
Connecting Rods	10198922 Forged Steel
Pistons	10215228 Forged Aluminum
Piston Rings	12523921
Camshaft	24502611 Hydraulic roller Lift: .510" I, .540" E. Duration @ .050: 211° I, 230° E.
Timing Chain	10114177 Single Roller
Cylinder Heads	14096801 Cast iron 118cc combustion chambers
Intake Valves	14097045 2.19"
Exhaust Valves	14097049 1.88"
Valve Springs	14097002
Rocker Arms	12523976 1.7:1
Torsional Damper	10216339 8"
Flexplate	10185034 14"
Valve Lash	Netlash
Fuel	92 Octane
Spark Plugs	MR43T Gap .045 #10 Rapid Fire Gap .045
Ignition Timing	4° BTDC

Technical Notes: For manual transmission applications use flywheel 14096987 and a suitable 11" clutch assembly. Distributor P/N 1104067 or melonized distributor gear P/N 10456413 must be used on all crate engines with steel camshafts.

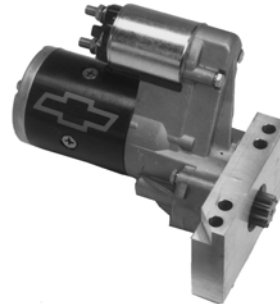


Service your crate engine with AC Delco filters and sparkplugs.

Customize your 454 HO with GM Performance Parts

Below is a sample of the parts that you'll find throughout our catalog to help you complete your crate engine installation or customize your crate engine for your specific application.

12361146 — High Torque Mini Starter - High power, compact design
Technical Note: This starter not recommended for competition.



1104067 — HEI Distributor

12342080 — Chevrolet Logo 14" Hi Performance Air Cleaner

12361323 — Roller Rocker Arms - 1.7 ratio full roller design (Qty 16)

12495518 — Stud Package, Rocker Arms (Qty 16)



12342099 — Tall Chrome Valve Cover - Provides clearance for roller rocker arms



12361052 — Chevrolet Logo 8mm High Performance Spark Plug Wires



12495360 — 4-Quart Oil Pan